



Flight Plan & Site Survey

Created using **RPAS Wilco**[®]

Operation Name:	wheat city perfect circle fc main
Pilot Name:	██████████
Pilot Certificate:	██████
Flight Start:	January 24, 2023 3:41 PM
Flight End:	January 24, 2023 5:41 PM
Flight Area (Latitude):	49° 51' 12.00" N (49.853)
Flight Area (Longitude):	99° 49' 45.00" W (-99.829)
Altitude - Radius:	Alt: 600 ft - Rad: 926.0 m (0.5 nm)
Airspace:	UNCONTROLLED
FIR - Contact:	CZWG - 204-983-8338
Weather:	-12.6 Celsius - Snow, Partially cloudy

Please ensure you received all required authorizations prior to flight.

Disclaimer

This Site Survey was created using RPAS Wilco by AIM Robotics. The flight plan contained is intended only for RPAS flights on the date/time and location specified. The user accepts all responsibility for the accuracy and completeness of the information contained.

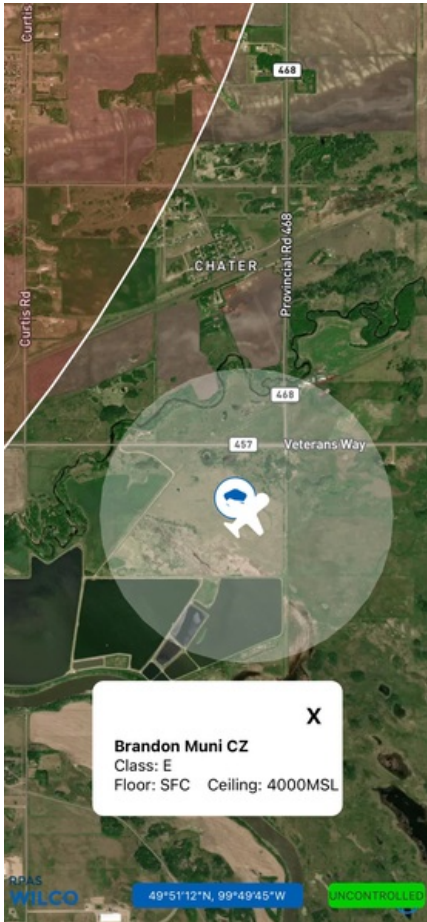
For the complete Terms & Conditions, see

<https://rpswilco.com/#/tnc>



Included

- Site Survey
- Obstacles (if available)
- Nearby Aerodromes
- Canadian Aviation Regulations
- GFA
- Aerodrome Supplements
 - METAR & TAF (if available)
 - NOTAMS
 - CFS

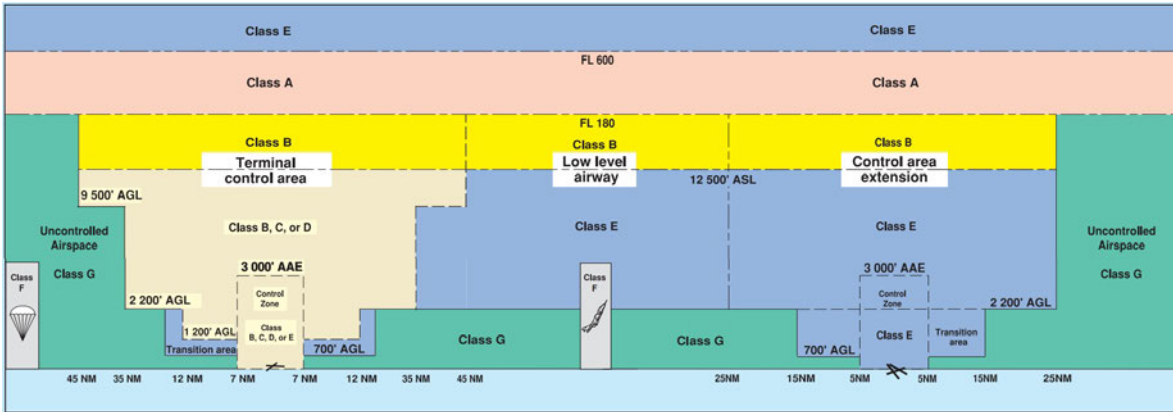
Flight Map



MAP Details

	Latitude	Longitude
 MODEL	49° 51' 12.00" N (49.853)	99° 49' 45.00" W (-99.829)
 Pilot	49° 51' 15.60" N (49.8543)	99° 49' 48.60" W (-99.8302)

Airspace Classification



Overlying Airspaces

Class	Name	Floor	Ceiling
B	Brandon, MB CAE	12500MSL	18000MSL
E	Brandon Muni, MB TA	700AGL	12500MSL
B	Brandon Muni, MB TA	12500MSL	18000MSL
E	T706 Airway	2200AGL	12500MSL
B	T706 Airway	12500MSL	18000MSL
E	V304 Airway	2200AGL	12500MSL
B	V304 Airway	12500MSL	18000MSL
E	Brandon, MB CAE	2200AGL	12500MSL
B	Brandon, MB CAE	12500MSL	18000MSL

Nearest Aerodromes & Distance from Operation

BRANDON MUNICIPALITY (CYBR AERODROME Cert)	Lat: 49.91	Long: 99.952	10.824 KM	5.84 NM
SOURIS GLENWOOD INDUSTRIAL AIR PARK (CJX5 AERODROME Reg)	Lat: 49.633	Long: 100.2	36.198 KM	19.55 NM
SPUD PLAINS (CRS5 AERODROME Reg)	Lat: 49.991	Long: 100.313	37.87 KM	20.45 NM
MINNEDOSA (CJU5 AERODROME Reg)	Lat: 50.272	Long: 99.763	46.793 KM	25.27 NM

Weather Information for Mission Day

Summary: Partly cloudy throughout the day with snow clearing later.

Condition	Temperature	Feels Like	Precipitation	Visibility	Cloud Coverage	Wind Speed	Humidity
Snow, Partially cloudy	12.6 Celsius	21.0 Celsius	100.0 %	12.9 Km	87.1 %	38.7 kph	84.3 %

Canadian Aviation Regulations

Division III — General Operating and Flight Rules

For full listing please visit <https://laws-lois.justice.gc.ca/eng/regulations/SOR-96-433/FullText.html#s-901.27>

Visual Line-of-sight

- **901.11 (1)** Subject to subsection (2) no pilot shall operate a remotely piloted aircraft system unless the pilot or a visual observer has the aircraft in visual line-of-sight at all times during flight.
- **(2)** A pilot may operate a remotely piloted aircraft system without the pilot or a visual observer having the aircraft in visual line-of-sight if the operation is conducted in accordance with a special flight operations certificate — RPAS issued under section 903.03.

Procedures

- **901.23 (1)** No pilot shall operate a remotely piloted aircraft system unless the following procedures are established:
 - **(a)** normal operating procedures, including pre-flight, take-off, launch, approach, landing and recovery procedures; and
 - **(b)** emergency procedures, including with respect to
 - **(i)** a control station failure,
 - **(ii)** an equipment failure,
 - **(iii)** a failure of the remotely piloted aircraft,
 - **(iv)** a loss of the command and control link,
 - **(v)** a fly-away, and
 - **(vi)** flight termination.
- **(2)** If the manufacturer of the remotely piloted aircraft system provides instructions with respect to the topics referred to in paragraphs (1)(a) and (b), the procedures established under subsection (1) shall reflect those instructions.
- **(3)** No pilot shall conduct the take-off or launch of a remotely piloted aircraft unless the procedures referred to in subsection (1) are reviewed before the flight by, and are immediately available to, each crew member.
- **(4)** No pilot shall operate a remotely piloted aircraft system unless the operation is conducted in accordance with the procedures referred to in subsection (1).

Site Survey

901.27 No pilot shall operate a remotely piloted aircraft system unless, before commencing operations, they determine that the site for take-off, launch, landing or recovery is suitable for the proposed operation by conducting a site survey that takes into account the following factors:

- **(a)** the boundaries of the area of operation;
- **(b)** the type of airspace and the applicable regulatory requirements;
- **(c)** the altitudes and routes to be used on the approach to and departure from the area of operation;
- **(d)** the proximity of manned aircraft operations;
- **(e)** the proximity of aerodromes, airports and heliports;
- **(f)** the location and height of obstacles, including wires, masts, buildings, cell phone towers and wind turbines;
- **(g)** the predominant weather and environmental conditions for the area of operation; and
- **(h)** the horizontal distances from persons not involved in the operation.

Operations at or in the Vicinity of an Aerodrome, Airport or Heliport

- **901.47 (1)** No pilot shall operate a remotely piloted aircraft at or near an aerodrome that is listed in the *Canada Flight Supplement* or the *Water Aerodrome Supplement* in a manner that could interfere with an aircraft operating in the established traffic pattern.
- **(2)** Subject to section 901.73 no pilot shall operate a remotely piloted aircraft at a distance of less than
 - **(a)** three nautical miles from the centre of an airport; and
 - **(b)** one nautical mile from the centre of a heliport.
- **(3)** No pilot shall operate a remotely piloted aircraft at a distance of less than three nautical miles from the centre of an aerodrome operated under the authority of the Minister of National Defence unless the operation is conducted in accordance with a special flight operations certificate — RPAS issued under section 903.03.

Records

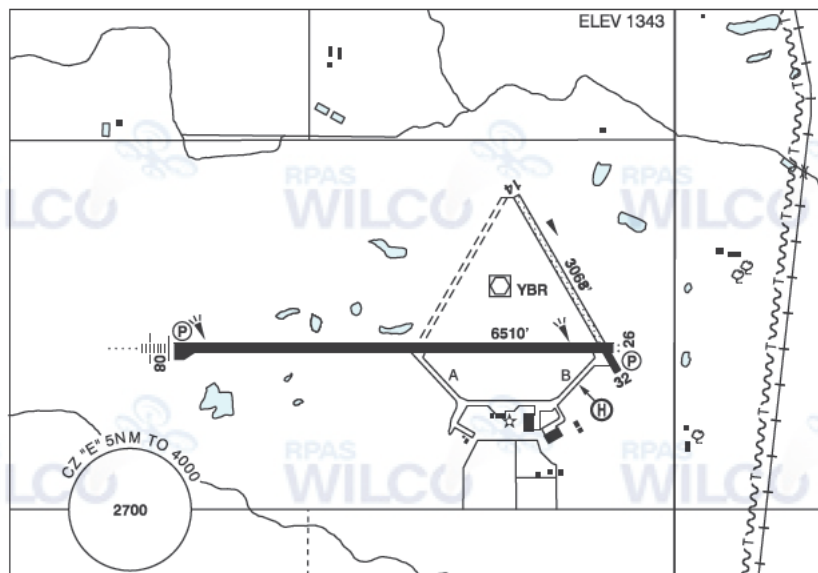
- **901.48 (1)** Every owner of a remotely piloted aircraft system shall keep the following records:
 - **(a)** a record containing the names of the pilots and other crew members who are involved in each flight and, in respect of the system, the time of each flight or series of flights and
 - **(b)** a record containing the particulars of any mandatory action and any other maintenance action, modification or repair performed on the system, including
 - **(i)** the names of the persons who performed them,
 - **(ii)** the dates they were undertaken,
 - **(iii)** in the case of a modification, the manufacturer, model and a description of the part or equipment installed to modify the system, and
 - **(iv)** if applicable any instructions provided to complete the work.
- **(2)** Every owner of a remotely piloted aircraft system shall ensure that the records referred to in subsection (1) are made available to the Minister on request and are retained for a period of
 - **(a)** in the case of the records referred to in paragraph (1)(a), 12 months after the day on which they are created; and
 - **(b)** in the case of the records referred to in paragraph (1)(b), 24 months after the day on which they are created.
- **(3)** Every owner of a remotely piloted aircraft system who transfers ownership of the system to another person shall, at the time of transfer, also deliver to that person all of the records referred to in paragraph (1)(b).

MANITOBA

AERODROME/FACILITY DIRECTORY

BRANDON MUNI MB

CYBR



REF	N49 54 36 W99 57 08 4N 6°E (2013) UTC-6(5) Elev 1343' A5007 LO4 HI4 CAP
OPR	Muni 204-729-2166 Cert Ldg fees
PF	A-1 C-2,3,4,5,6
CUST	AOE/15 888-226-7277 15-23Z‡
FLT PLN	Pilots to open/close VFR flt plan with Edmonton rdo, FISE or by phone.
FIC	Edmonton 866-WXBRIEF (Toll free within Canada) or 866-541-4102 (Toll free within Canada & USA)
WX	METAR H24. TAF H24, issue times: 00, 06, 12, 18Z.
SERVICES	Call out chg may be levied for one or more svc
FUEL	100LL, JA-1 (FSII avbl), SP, HPR 14-23Z‡ O/T call out chg
OIL	All
S	1,2,3,4 (ltd),5,6
SUP FL	D-Ice (avbl by truck)
JASU	CE16
PVT ADV	Brandon Flight Centre 122.95 204-728-7691
RWY DATA	Rwy 08(085°)/26(265°) 6510x150 asphalt Rwy 14(144°)/32(324°) 3068x60 treated gravel/asphalt First 438' Rwy 32 asphalt
RWY CERT	Rwy 08/26 AGN IIIB Rwy 14/32 AGN II
APRON	No power turns permitted on tml apron. Tml apron prkg rstd for sked tfc only 1800-1930Z‡.
RCR	Opr Ltd win maint Rwy 14/32. Rwy 14/32 rstd to acft under 12,000 lbs. A/D maint 12-02Z‡ Mon-Fri, 14-00Z‡ Sat-Sun O/T 1 hr PN for AMSCR and CRFI. Call out charge may be levied. 204-729-7026.
LIGHTING	08-AN(TE HI) P2, 26-AS(TE HI) P2

MANITOBA

AERODROME/FACILITY DIRECTORY

BRANDON MUNI MB (Cont'd)

CYBR

COMM	
RADIO	122.1 (E) (emerg only 204-728-7169)
RCO	Edmonton 123.275 (FISE) 126.7 (bcst)
MF	rdo 122.1 5NM 4000 ASL (CAR 602.98)
ARR	Winnipeg Ctr 132.25
DEP	Winnipeg Ctr 132.25
PAL	Winnipeg Ctr 132.25
NAV	
NDB	BRANDON BR 233 (L) N49 54 29 W100 04 24
VOR/DME	YBR 113.8 Ch 85 N49 54 36 W99 56 44 (1368')
DME	IBR 110.1 Ch 38 N49 54 31 W99 57 43 Pvt
ILS	IBR 110.1 (Rwy 8) Pvt
PRO	Rgt hand circuits Rwy 26 (CAR 602.96). Periodic extv glider ops to 4000 MSL. Gliders & tow acft opr fr infield S of Rwy 08/26. Glider & tow acft circuits S of Rwy 08/26. Rgt hand circuits Rwy 32 (CAR 602.96). Gliders & tow acft opr fr infield W of Rwy 14/32. Glider & tow acft circuits W of Rwy 14/32. Acft inbd fr the S may be requested to rpt crossing the Trans Canada Hwy.
CAUTION	Hydro P-lines 154 AGL unlgtd 9000' E of Thld 26. Ocsl parajump activity within 1.5NM of A/D to 14,000 ASL. Hi ints lgt oprg dusk to dawn fr hotel roof at N49 49 56 W99 57 40 (4.7NM S A/D). Beams projecting upward. Hi ints lgt may create temporary effects to vision.

MANITOBA

AERODROME / FACILITY DIRECTORY

SOURIS GLENWOOD INDUSTRIAL AIR PARK MB

CJX5

REF	N49 38 W100 12 2.5E 6°E (2013) UTC-6(5) Elev 1480' A5007 LO4	<p>The diagram shows a runway layout with a 5 NM radius circle centered on a point. A runway is shown with a length of 2200 units and a width of 80 units. A distance of 2000 units is marked from the center to the end of the runway. The diagram also shows a 3100 unit distance from the center to the edge of the 5 NM radius circle. The elevation is noted as ELEV 1480.</p>
OPR	Souris & Glenwood Aprt Comsn 204-741-0500 or 204-483-5220 Reg	
PF	A-1 C-2,4,5	
FLT PLN	Pilots to open/close VFR flt plan with Edmonton rdo, FISE or by phone.	
FIC	Edmonton 866-WXBRIEF (Toll free within Canada) or 866-541-4102 (Toll free within Canada & USA)	
SERVICES		
FUEL	100LL	
S	2(win only), 5	
RWY DATA	Rwy 08(083°)/26(263°) 2200x80 TURF Rwy 14(143°)/32(323°) 2900x100 ASPH	
RCR	Opr Ltd win maint	
LIGHTING	14-(LO), 32-(LO) SS-SR	
COMM		
ATF	tfc 123.2 5NM 4500 ASL	
PRO	Ultra-light circuit hgt 2000 ASL.	
CAUTION	Ultra-light tfc. Agricultural spray acft dur sum. 60 AGL P-lines 1.0NM NW thid Rwy 14. Lgtd twr 1815 ASL (355 AGL) 1.5NM SW of A/D.	

MANITOBA

AERODROME/FACILITY DIRECTORY

WHEATLAND / SPUD PLAINS MB

CRS5

REF	N49 59 26 W100 18 48 1.7SSW 5°E (2021) UTC-6(5) Elev 1542' A5007	<p>ELEV 1542</p> <p>3360'</p> <p>60</p> <p>20</p> <p>silos</p> <p>RADIUS 5 NM</p> <p>3000</p>
OPR	Paul Adriaansen 204-834-3866 Reg PPR	
FLT PLN		
FIC	Edmonton 866-WXBRIEF (Toll free within Canada) or 866-541-4102 (Toll free within Canada & USA)	
RWY DATA	Rwy 09/27 3360x75 TURF/CONC Thld 27 displ 374'	
RCR	Opr 204-729-7241 No win maint	
COMM		
ATF	tfc 123.2 5NM 4600 ASL	
CAUTION	Grain leg 85' AGL E of rwy.	

MANITOBA

AERODROME/FACILITY DIRECTORY

MINNEDOSA MB

CJU5

REF	N50 16 19 W99 45 47 3NE 7°E UTC-6(5) Elev 1840' aprx A5007
OPR	K. Kane 204-867-3147 Fax 204-867-2640 Reg PPR
PF	B-1 C-2,3,4,5
FLT PLN	Pilots to open/close VFR flt plan with Edmonton rdo, FISE or by phone. FIC Edmonton 866-WXBRIEF (Toll free within Canada) or 866-541-4102 (Toll free within Canada & USA)
SERVICES	S 5,6
RWY DATA	Rwy 10(103°)/28(283°) 2750x75 turf/snow RCR Opr Ltd win maint
COMM	ATF tfc 123.2 5NM 4800 ASL

